

# Welbourne Primary School Newsletter

www.welbourne.haringey.sch.uk

 @welbournepri

## Dear Parents and Carers,

It was great to see so many come to our recent parents' evenings. As parents and carers, we always want you to take part in your child's learning journey and discussions with your child's class teacher is an important step to support your child.

A big thank you to parents who completed the survey. From all that responded, 98.5% of parents felt their child was happy in school and 97% of parents shared that their child felt safe at school, with 91.7% of parents sharing that they would recommend Welbourne to another parent. Although there is always more to do, these are great results. Further information about the survey will be shared at a later date.

For parents who are yet to meet their child's teacher, we encourage you to arrange an appointment through the office as we believe that parental involvement is important to the success of your child.

## Pupil attendance

Currently, pupil attendance is too low. Children with high levels of attendance (above 95%) are most likely to do best in school and currently too many children have attendance lower than this. While there are occasions when children are not well enough to attend school, procedure must be followed.

Moving forwards, there will be a change to our systems. If your child is away from school and we have not been informed why, you will receive an 'Unauthorised Absence Letter'. If your child misses ten sessions (equivalent of 5 days) within a ten school week period, we have been informed by the **Educational Welfare Team** that a Fixed Penalty Notice of £160 must be issued. There are currently 29 children whose families are at risk of a Fixed Penalty Notice for ongoing unauthorised attendance. Please click [here](#) for more information.

On a more cheerful note, it is the time of year when lots of events are coming up. I hope as many of you as possible can attend!

*Mr R Lane*

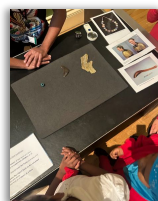
**Together we learn. Together we succeed**

## Educational Visits

### Y3 - British Museum



We went to the British Museum to look at Bronze Age and Iron Age artefacts. We then drew our favourite/most fascinating item.



We then had a little look at the Ancient Egyptian artefacts ready for next term.

### Y4 - Royal Albert Hall

Year 4 went to a fabulous concert at the Royal Albert Hall enjoying performances by young musicians.



*\*We are awaiting pictures from Pendarren and will share them in our next newsletter.*



## Fly-tipping

We've noticed an increase in fly-tipping in our area, which affects the community's environment and safety. Please help us tackle this issue by reporting any incidents to the local council. Together, we can keep our neighborhood clean and welcoming!



Press the Haringey sign to go to the reporting page of the Haringey website.

## Dates for your diary....

- **Winter Fair - Thursday 5th December - 3:25pm - 5pm**
- Clarinet & Trumpet Concert - Tuesday 10th December at 2:45pm
- **KS1 (Y1 & Y2) Christmas Concert - Thursday 12th December - 2:15pm**
- UKS2 (Y5 & Y6) Christmas Concert - Friday 13th December - 2:15pm
- **Nursery Christmas Workshop - Monday 16th December - 9:30am and 2:30pm**
- Reception Christmas Workshop - Monday 16th December - 2:15pm
- **LKS2 (Y3 & Y4) Christmas Concert - Tuesday 17th December - 2:15pm**
- Christmas Dinner and Christmas Jumper Day - Thursday 19th December
- **School Finishes - Friday 20th December - 3:25pm**
- INSET Day - Monday 6th January 2025
- **School Restarts - Tuesday 7th January 2025 - 8:55am**



## Our Commitment to Protecting Children

At Welbourne, safeguarding the welfare of our pupils is at the heart of everything we do. Ensuring that children feel safe, supported, and protected is not just our responsibility—it's a fundamental part of creating an environment where they can thrive and learn.

### Our Duty to Safeguard

Safeguarding means protecting children from harm, abuse, and neglect, and promoting their well-being. While much of this involves fostering a safe, nurturing school environment, there are times when safeguarding concerns arise. These may include:

- *A child disclosing something that worries or frightens them.*
- *Staff observing signs or behaviours that raise concerns.*

When such situations occur, we have a legal and ethical responsibility to act in the best interests of the child.

## What Happens When a Concern Is Raised?

- 1. Listening and Recording**
  - A child discloses a concern, or staff observe signs of concern.
  - The information is recorded accurately and sensitively.
- 2. Reporting to the DSL**
  - The concern is passed to the Designated Safeguarding Lead (DSL) or Deputy DSL.
  - The DSL assesses the situation and decides on the next steps.
- 3. Seeking Advice from MASH**
  - The DSL contacts the Multi-Agency Safeguarding Hub (MASH) - Haringey's Children's Services.
  - MASH provides expert advice and coordinates actions across relevant services.
- 4. Acting on Professional Guidance**
  - The school follows directions from MASH to safeguard the child.
  - Relevant professionals are involved as needed.
- 5. Maintaining Confidentiality**
  - Information is shared only on a need-to-know basis.
- 6. Supporting Families**
  - Parents/carers are engaged openly and respectfully, where appropriate.
  - The school provides guidance and support while prioritising the child's safety.

These steps ensure the school fulfills its responsibility to protect children effectively and collaboratively.

We encourage all parents and carers to speak with us if they ever have concerns about their child or another child. Safeguarding is a shared responsibility, and by working together, we can ensure that every child at Welbourne feels secure and supported.

Thank you for your ongoing partnership in keeping our children safe.



## Class Assemblies

We are delighted to invite families into school again to watch our incredible class assemblies. Below you will see dates for each class assembly of the Spring Term and these have also been added to the school calendar. Assemblies start at 9:15am

### Friday Assemblies:

**17/01/25 Y5 Mondrian**

**24/01/25 Y2 Da Vinci**

**31/01/25 Y1 Basquiat**

**07/02/25 Y6 Kahlo**

**14/02/25 Y4 Miro**

**28/02/25 Y5 Van Gogh**

**07/03/25 Y3 Purdy**

**14/03/25 Y1 Hockney**

**21/03/25 Y6 Barksdale**

**28/03/25 Y2 Matisse**

**04/04/25 Y4 Hepworth**

We hope you can join us!  
If your child's class is not listed their assembly will be in the Summer term.



## Join Us at Breakfast Club

Start the day right by sending your child to our breakfast club! With a healthy breakfast, fun activities, and a great sports coach leading engaging games, children develop fitness, teamwork, and energy for the school day. It's a fantastic way to build confidence, friendships, and set a positive tone for learning!







## Book Recommendation

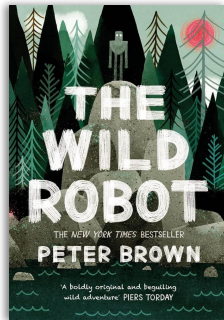
### THE WILD ROBOT

The heartwarming and action-packed illustrated novel explores what happens when nature and technology collide.

When robot Roz opens her eyes for the first time, she discovers that she is alone on a remote, wild island. She has no idea how she got there or what her purpose is - but she knows she needs to survive.

After battling a fierce storm and escaping a vicious bear attack, she realises that her only hope for survival is to adapt to her surroundings and learn from the island's unwelcoming animal inhabitants.

As Roz slowly befriends the animals, the island starts to feel like home - until, one day, her mysterious past comes back to haunt her.



# Welbourne Winter Fair

Main Hall, Welbourne

5<sup>th</sup> THURSDAY  
DECEMBER  
15:30 - 17:00 PM

Tombola ★ Games ★ Bookstalls  
Gifts for sale ★ Foodstalls ★ Sweet treats

CASH ONLY  
EVENT

## Violin Concert



Our talented Year 4, Year 5, and Year 6 violinists gave an outstanding concert, showcasing their hard work and musical skills. Their performances were truly impressive, and the audience was captivated by their dedication and passion. Our visitors Mr Charalambous MP and Haringey Councillor Zena Brabazon were particularly impressed by the show. Well done, everyone!



## Reception Admission Application

Please note that you must apply for your child's Reception school place by **15th January 2025** in order to ensure you are allocated a Reception place for September 2024. Even if you have a nursery place you still need to apply. Please apply online using [eAdmissions](#).

Haringey - [Applying for a School Place Handbook 2025](#).



## National Online Safety<sup>®</sup>

It is essential we work together to ensure it's safe for every child to go online. We will be sharing information and advice each month to help you learn about staying safe online as a family.



[Follow this link to What Parents & Educators need to know about FORTNITE](#)



## Attendance & Punctuality

Your child should not be off school unless they are unwell as days off may affect your child's progress. All children have a right to an education (UNICEF article 28) and need to attend school regularly to benefit.

Huge congratulations to **Miro Class** for their excellent punctuality this month. Please keep up your efforts to improve attendance and punctuality in all year groups.

Class	Attendance	Lates
YR - Goldsworthy	87.0%	8
YR - Murakami	84.5%	23
Y1 - Basquiat	91.8%	32
Y1 - Hockney	87.9%	10
Y2 - Da Vinci	88.8%	16
Y2 - Matisse	92.2%	20
Y3 - Haring	94.9%	18
Y3 - Purdy	94.0%	28
Y4 - Hepworth	92.7%	8
Y4 - Miro	96.0%	4
Y5 - Mondrian	94.4%	26
Y5 - Van Gogh	88.1%	28
Y6 - Barksdale	96.0%	14
Y6 - Kahlo	95.6%	16

Star Attendance of the Month:

**Miro & Barksdale Class - 96%**

Our Total Attendance of the Month: 91.69%

Our Total Attendance Target: 96%



## Wellbeing Corner

*The Importance of Outdoor Play*

*Even in Cold Weather*

Fresh air and outdoor play are vital for children's wellbeing, even during the colder months. Spending time outside helps boost mood, improve focus, and strengthen the immune system. Physical activity in nature also promotes better sleep and reduces stress. With warm clothes and proper gear, kids can enjoy seasonal fun like exploring nature or building resilience through play. Let's encourage outdoor adventures to keep children healthy, happy, and thriving all year round!



## Opportunity to become a Parent Governor

There is currently a vacancy to become a Parent Governor of Welbourne. Their role is to work alongside the other Governors to develop a strategy to make the school as good as it can be. Further information about the role can be found [here](#). If you would like to become a member of the governing body, please complete the required form by **Friday 13th December**.

**TOTTENHAM**  
*Winter Festival*  
**SAT 7TH DEC**  
**Tottenham Green N15**

CHRISTMAS MARKET, SANTA'S GROTTO,  
 TREE LIGHT UP, LIVE MUSIC, FUN FAIR  
 12 NOON-6PM





# Big Festive Fete

**Sunday 8 December 2024**  
**2.30pm – 6.30pm | Christ's College Finchley N2 0SE**

Celebrate the festive season and North London Hospice's **40th Anniversary** at our first ever Big Festive Fete!

Enjoy an afternoon of market shopping, arts and crafts, delightful food, live performances and carnival-themed games that will suit the whole family.

All proceeds are donated to North London Hospice.  
 Register at [northlondonhospice/events/big-festive-fete/](https://northlondonhospice/events/big-festive-fete/)  
 or scan the QR Code



# 40<sup>th</sup>

Online early-bird registration fee: £3 and Under-12s go FREE

Charity No. 285300. Reg. Address - 47 Woodside Avenue, London, N12 8TT. Company Reg No: 01654807

**SEND** Haringey Two SEND events in Haringey this December:



## Walk and Talk

Our monthly Walk and Talk usually every first Monday of the month - whatever the weather! Afterwards we'll go to a café.

This is a great way to meet other mums, dads, & carers of children & young people with Special Educational Needs and/or Disabilities (SEND).

Please let us know if you have any access requirements - [hello@sendpowerinharingey.org](mailto:hello@sendpowerinharingey.org)

### December: Finsbury Park



Toilets are available in this park

**Date: Monday 2nd December 2024**

**Meeting point: Park View Cafe (N4 1BZ)**

**Meeting time: 11:30am**



Walk leaders:  
Lizzy and Grace




Grace's number: 07549 023657

## Y6 Kindness Workshops



Year 6 participated in deep:black workshops, exploring kindness to themselves and others through play. The sessions encouraged reflection on the impact of giving and receiving kindness and highlighted how kindness fosters emotional well-being and mental health for both oneself and others.

## Nursery Admissions

If your child is 3 before 31st December 2024 they are entitled to a 15 hour Nursery place from January 2025.

If you are a working parent you may be entitled to a 30 hour place. Please enquire at the school office: 020 8808 0427.

You can also pre-register younger children by asking the office for a Pre Admission Form.

### Autism Seminars for Families

**5 and under**

Use the camera on your smartphone to take a picture and book a place.



5s and under Family Seminar -  
 Tuesday 3rd December 10am-12pm  
 - Online: MS Teams

**Autism Seminars for Families**



Understanding Autism

A session for parents/carers of children 5 and under with a recent diagnosis of autism.

**Tuesday 3rd December 2024 10-12pm**

The seminar will help families to:

- Develop an understanding of autism
- Discuss experiences of getting a diagnosis
- Identify how autism can affect families
- Explore practical ideas for developing communication strategies
- Clarify support that families may be entitled to and ways to access it

This session will be online via MS Teams. Register your interest to attend using the Forms link below or using the QR code at the top of this flyer: <https://forms.office.com/e/6C76nMiGCa> If you have any difficulties email: [portage@haringey.gov.uk](mailto:portage@haringey.gov.uk)  
 T: 07980 316 705