



September 2025

What an exciting start to the school year at Welbourne!

Classes have smoothly moved into their new year groups and have taken on new routines.

Thank you all for your warm welcome. In my first weeks at Welbourne, I've had the pleasure of meeting your wonderful children.

Thanks to the families who joined the Introduction Sessions and those who have reached out to me. Our community is clearly full of hope and support.

Over the year, we will adapt this newsletter so it delivers the best of Welbourne. We welcome your feedback and input.

We are currently hosting tours for new families looking to join Welbourne. These are every Tuesday at 10am, so please let your friends and family know they can contact the school office to book a place.

*Message from Ms Taylor, Headteacher*

## You said...

“We want better communication from the school.”

“We want clearer information on how SEND pupils are supported.”

“We want to help the school.”

## We heard....

We shall be launching a cloud-based system, called Arbor.  
We shall be producing a clear Communication Protocol, so you know who to contact and how.  
We will be launching weekly bulletins that capture all the key messages and reminders you need for the week.

We are introducing clear assessment systems so teachers can share with you the progress of SEND learners and the impact of their provisions. We are working with other partners in Haringey to improve early support for our youngest pupils with SEND.

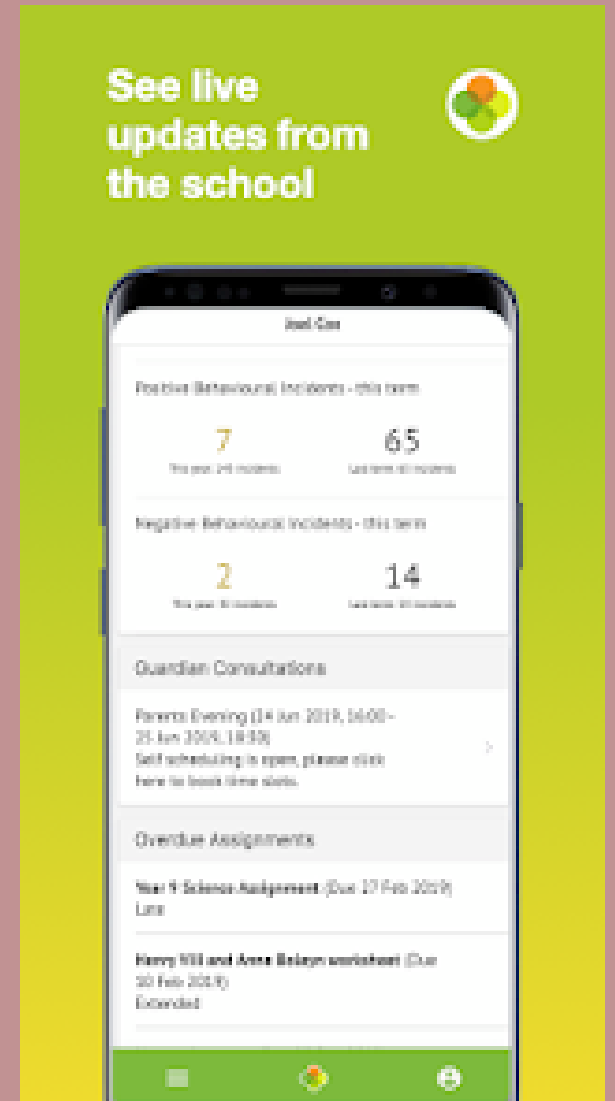
We are putting together a Family Focus Group to help us move forward together. This will be looking at different areas and we are keen to involve families that represent the rich diversity of our school.



# Incoming....

We understand that communication from the school needs to make it easy for you.

In the next few months we will be moving systems to Arbor. This will mean all school communication will be via the Arbor app and portal. This will include booking clubs and parents evening, paying for trips and receiving messages.





# Our School Dog, Woody

**Is it true that Welbourne has a school dog?**

Yes! His name is Woody, he is a Golden Retriever and he is 4 months old.

**Why do we need a school dog?**

A school dog can improve emotional wellbeing by reducing stress and anxiety, creating a calmer environment for all.

They also enhance learning and literacy skills, as children, especially reluctant readers, feel more confident reading aloud to a non-judgmental listener. This can boost fluency and focus in the classroom.

A school dog teaches empathy and responsibility by giving pupils a hands-on opportunity to learn about caring for another living creature. Finally, dogs are a great asset for mental health and inclusive education, providing comfort and a predictable presence for pupils with special needs or emotional challenges.

**Is it safe to have a school dog?**

A thorough risk assessment is in place, under the guidance of The Dogs Trust. Woody's parents were therapy dogs, so he has a calm nature. He is being trained to The Kennel Club standards to ensure he can follow cues and positive social behaviours.

If your child has an allergy, please let your class teacher know.

# Good Attendance is Expected

Families have made it clear that they want the school to have an improved Ofsted rating.

Attendance is a key factor of Ofsted's report, so we have to improve it together.

Aim for your child's attendance to be **96%**. They have to be in school to succeed.





We are delighted to welcome a local, mental health service to Welbourne.









Streetz Ahead already run their Dance Giantz club on Fridays, now they will be delivering their BASE Mentoring programme.

Pupils can benefit from mentoring, families from Parent Skills Hubs - all to promote positive mental health.

# PE Uniform for PE Days

## - how do you like the change?

All children are now coming to school in their PE kits. Teachers will remind families where the uniform is not correct.

Correct PE Uniform	Not to be worn on PE days
<div>plain black joggers or shorts</div>	<div> No logos, stripes or labels allowed</div>
<div>plain black sweatshirts</div>	<div> No logos, stripes or labels allowed No hoodies</div>
<div>plain white t-shirt</div>	
<div>trainers</div>	<div>no plimsols</div>
	<div>no football shirts</div>





**WELBOURNE  
PRIMARY**



School Street **SS54**

**Montague Road,  
Stainby Road,  
Saltram Close**

Pedestrians, cyclists and  
exempt vehicles only

**Monday to Friday  
8:30 - 9:15am and  
2:30-3:45pm**

School term time only

For more information, how to  
apply for an exemption  
or give feedback please visit:  
[www.haringey.gov.uk/school-streets](http://www.haringey.gov.uk/school-streets)



# School Street Launch

This month we had the official launch of our School Street - celebrating safer streets for our pupils and families. In assembly, we spoke about the positive impact for those with asthma - cleaner air for healthier lungs!

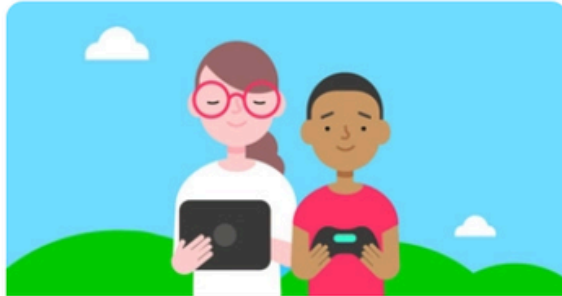


# NOTICEBOARD

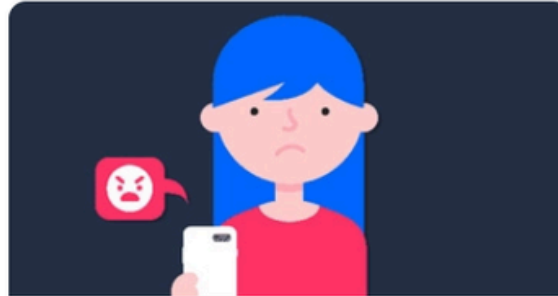
internet  
matters.org

## How we support children's online safety

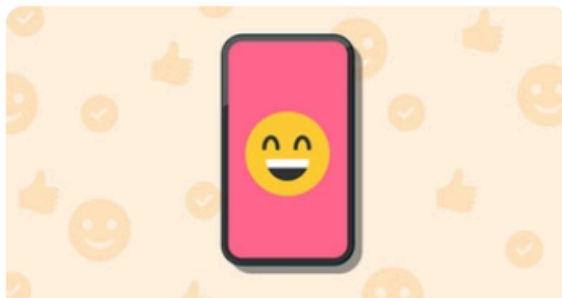
Find information and safety settings for your child's devices and apps, along with guidance to tackle online issues they may face.



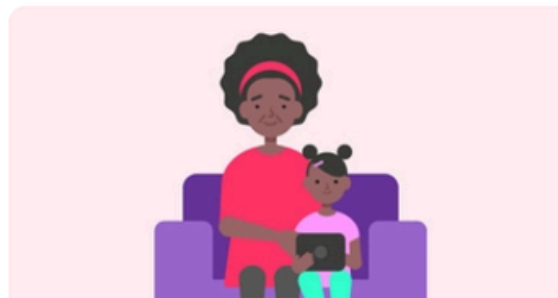
Set up device safety settings



Tackle online issues



Choose age appropriate apps



Get tips to talk about online safety



### Still not sure where to start?

Tell us a little about you and we'll provide you with a tailored resource pack.

**GET PERSONALISED ADVICE**



# NOTICEBOARD



This is a great project coming to Welbourne. To ensure it is successful, we need some parent volunteers who can give 2 hours a week to the school. Please email Ms Noufasse, our Reading Lead at the school if you are interested.

A vibrant, circular poster for the BBC 500 Words competition. The top half has a yellow background with a large white circle containing the text "BBC 500 WORDS" in bold, dark blue letters. The bottom half has a dark blue background with the text "THE COMPETITION IS NOW OPEN! SUBMIT HERE" in yellow, orange, and white. The poster is decorated with various colorful illustrations including a boy with a crown, a rocket, a cat, books, a pencil, and a robot. At the bottom, there is a link to submit stories and a deadline.

[Click here to submit your stories](#)

All stories must be submitted before 9pm, Friday 7 November.