



**December 2025**

As we approach the end of a very busy and productive autumn term, I wanted to take a moment to reflect on everything our school community has achieved since September. It has been a joy to walk through the corridors this month and see the school come alive with festive spirit. The sense of kindness and community has never been stronger.

This term has been one of significant progress. We have seen a fantastic uptake in our new after school clubs,

I would like to extend a huge "thank you" to our dedicated staff, who have worked tirelessly to ensure every child feels supported and inspired. I

also want to thank you, our families, for your ongoing partnership—whether it was attending parents' evenings, supporting our winter fair, or ensuring your children arrived ready to learn each day.

While the holidays are a time for celebration, they can also be a busy and sometimes overwhelming period. We encourage all our families to take this time to rest and reconnect.

On behalf of all the staff and governors at Welbourne, I wish you a very merry Christmas and a peaceful, happy New Year.

We look forward to seeing you all refreshed and ready for a new term in 2026!

***Message from Ms Taylor, Headteacher***



# Book Grotto

Thank you to our librarians, Ms Noufasse, Ms Jones and Ms Delia for our wonderful Book Grotto.

Every child in the school has paid a visit and received their own book. Children have been excited to share their selections.

# Reading Buddies

A group of Y5 reading buddies are diligently and quietly mentoring younger pupils in the school. They read daily with pupils, supporting their confidence and praising their progress. They are an asset to Welbourne. Thank you to Ms Holland for setting this up.





# Christmas Workshops



Thank you to all families who attended the Christmas Workshops in Nursery and Reception.  
We love having families sharing these experiences in the classroom



# The Welbourne Team

Every month, we want to introduce a member of the staff team.

The Welbourne Team is a strength of knowledge and expertise.

Its greatest asset, is that the team is open to learning.



This month, we are celebrating the service of **Ms Landeut** one of our Early Years Teaching Assistant's.

Ms Landeut has been at Welbourne for 18 years and has welcomed pupils in the Nursery and Reception with her warmth and gentle nature.

“I believe in the children of Welbourne, that is why I am here.”

Ms Landeut has exceptional early years knowledge and experience, playing an important role in ensuring every child has the a high standard of education.

Ms Landeut is one of our Early Years Conversation Champions, embedding quality interactions for all children!





# Welbourne Choir



Our choir represented Welbourne this month at the Haringey Schools Christmas Singing Festival, at Alexandra Palace. They were superb, we are so proud of them! Thank you Miss Edwards for giving them this opportunity.



# Winter Fair



Thank you to every one of our PTA who made the Winter Fair come together to kick off December at Welbourne! It was filled with festive fun, delicious food and showed the strength of our community is in being together. We shall be launching our monthly PTA meetings next term and all are welcome!





### ADHD workshop for Haringey parents: diagnosis and beyond

January 20, 2026

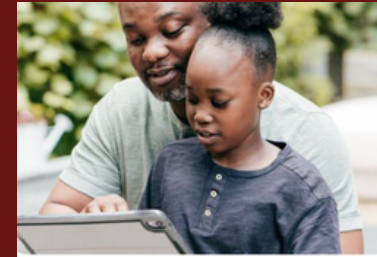
[Find out more](#)



### ADHD workshop for Haringey parents: emotion coaching

March 17, 2026

[Find out more](#)



### ADHD workshop for Haringey parents: screen time

February 24, 2026

[Find out more](#)



### Markfield's Family Club

Every second Saturday of the month (term-time). Activities include soft play, adventure play, music, art, and lunch.

[Find out more](#)



### WAVE Hub

For everyone with and without Learning Disabilities. Join WAVE every Thursday for creative and active groups, plus their weekly community mile.

[Find out more](#)



### Somerford Grove Adventure Playground

Run by Haringey Play Association, the Saturday Family Sessions are suitable for all ages

[Find out more](#)

# Inclusion

There is a space for  
all here at  
Welbourne.

